

## Your collection service in Canterbury

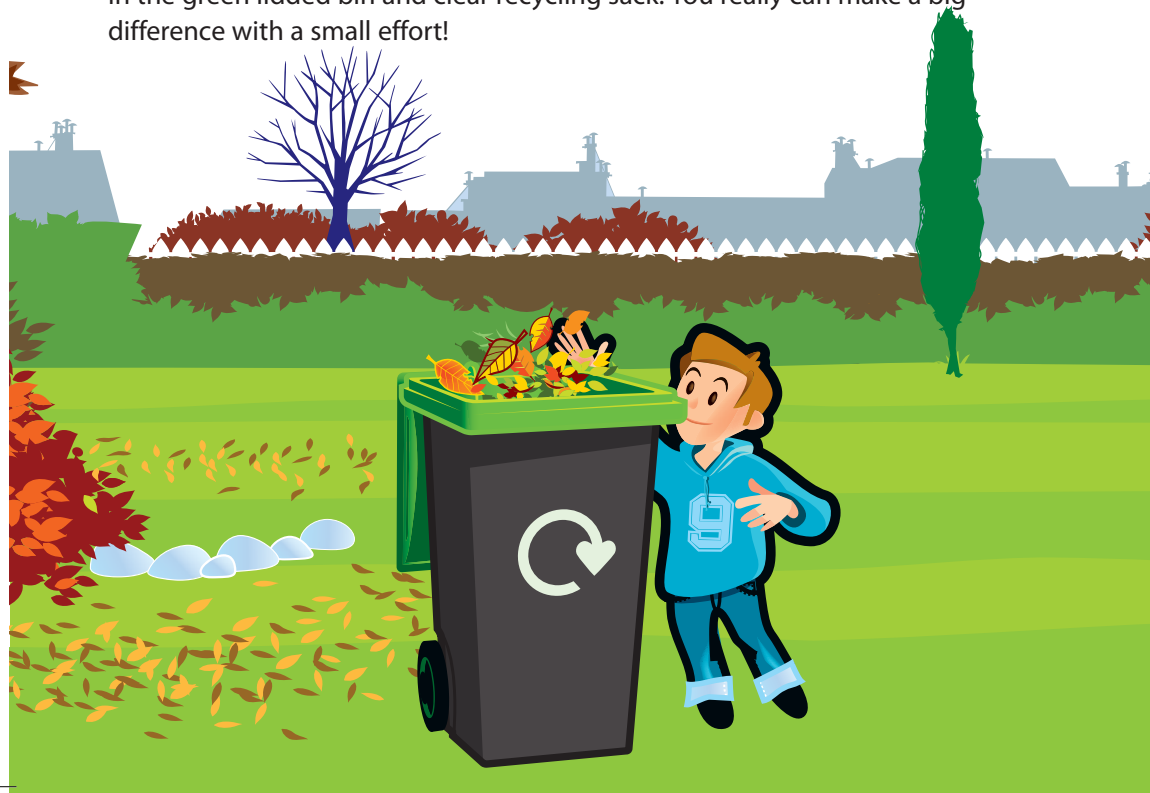
Over 60% of our household waste can be recycled or put to good use.

A big thank you to all residents recycling in the Canterbury district. We are doing really well, but need to work harder. The UK's landfill sites contribute 25% of the UK's methane emissions.

## Why recycle?

- Less waste buried in landfill sites means less methane produced, which is better for our environment.
- Valuable materials are used again and again.
- Recycling saves energy and carbon in not having to use raw materials to produce items.
- It helps Canterbury City Council meet its government targets, which are set to protect our environment.

This guide will show you how easy it is to recycle, and what items should be placed in the green lidded bin and clear recycling sack. You really can make a big difference with a small effort!



## What can I recycle in my clear recycling sack?



### ✓ Yes please

<b>mixed paper &amp; card</b>	<ul style="list-style-type: none"> <li>■ Newspapers</li> <li>■ Magazines</li> <li>■ Catalogues</li> <li>■ Junk mail</li> </ul>	<ul style="list-style-type: none"> <li>■ Paper</li> <li>■ Telephone directories</li> <li>■ Yellow Pages</li> <li>■ Cardboard packaging</li> </ul>
	<b>plastic bottles</b> <ul style="list-style-type: none"> <li>■ All clear and coloured plastic bottles (for example milk, pop, squash, shampoo, mouthwash and bleach)</li> </ul>	
Please do not put any other types of plastics other than clear plastics with 1 and 2 in with your recycling.		
<b>food tins &amp; drink cans</b>	<ul style="list-style-type: none"> <li>■ Drink cans</li> <li>■ Food cans</li> <li>■ Pet food cans</li> </ul>	<ul style="list-style-type: none"> <li>■ Kitchen foil</li> <li>■ EMPTY aerosol cans (with the nozzles removed)</li> </ul>

**Please remember to flatten boxes, wash and squash plastic bottles and remove lids, empty and rinse food containers, put materials loose in your clear recycling sack and tie securely. Secured bundles of cardboard and newspapers will be collected if placed beside recycling sacks.**

## What can I recycle in my green lidded bin?



All the garden waste collected by the council is turned into compost in just over 16 weeks.

### ✓ Yes please

<b>garden waste</b>	<ul style="list-style-type: none"> <li>■ Grass cuttings</li> <li>■ Hedge pruning</li> <li>■ Leaves</li> <li>■ Tree bark</li> </ul>	<ul style="list-style-type: none"> <li>■ Weeds, flowers and plants</li> <li>■ Branches (4cm thick or less)</li> </ul>
---------------------	--	---

**✗ No thanks** Please **do not** put the following items in your green lidded bin

<b>garden waste</b>	<ul style="list-style-type: none"> <li>■ Food waste</li> <li>■ Glass</li> <li>■ Wood</li> <li>■ Polystyrene</li> </ul>	<ul style="list-style-type: none"> <li>■ Paper</li> <li>■ Cardboard</li> <li>■ Plastic bags</li> <li>■ Soil or rubble</li> </ul>
---------------------	--	--

## IMPORTANT - RECYCLE RIGHT

**To keep our staff safe, the following items **MUST NOT** be put into your green lidded bin or clear recycling sack:**

- Needles
- Medicines
- Knives
- Scissors
- Glass
- Syringes
- Car parts
- Garden implements
- Bottles containing liquids
- Hoover bags
- Batteries
- Plastic furniture and toys
- Tools
- Dead animals
- Food waste



Thank you for recycling in Canterbury

## Recycling banks, recycling centres and donating to charities

You can visit over 40 sites across the district to recycle glass, paper, cans, textiles and books.

For more information on recycling bank locations near you call **01227 862 138** or visit **www.canterbury.gov.uk/recycling**

Most other items can be recycled at your local Household Waste Recycling Centres at Vauxhall Road, Canterbury CT1 1XL and Studd Hill, Westbrook Lane, Herne Bay CT6 7RY.


For more information about your local Household Waste Recycling Centre call **Kent County Council** on **0845 345 0210** or visit **www.kent.gov.uk/recycleforkent**

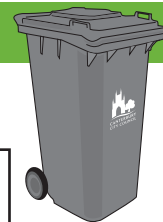
Unwanted but useable household goods can be donated to Necessary Furniture Project, Unit 2B, Canterbury Industrial Park, Island Road, Hersden, Canterbury CT3 4HQ

For more information call the Necessary Furniture Project on **01227 712 680** or visit **www.necessaryfurniture.co.uk**

## Alternate Weekly Rubbish Collections

✓ Yes please

	<b>household waste</b>	■ Food waste	■ Black sack waste
		■ Nappies	



- Recycle as much of your waste as you can. Visit **www.canterbury.gov.uk/recycling** for information or call **01227 862 138**.
- Check your collection calendar and put the right material out on the right day (recycling in clear sacks one week, landfill waste in black sacks in your bin the next).
- Put your waste out by 7am on the correct day on the boundary of your house/property/garden.
- Make sure your bin lid is closed and all sacks of waste are tied and placed in your bin (open bins and loose sacks will not be collected).
- Tell us if you don't have a bin.

## Time and place for your collections

Please place your rubbish and recycling out by 7am on your scheduled collection day.

For more information about kerbside recycling and our other recycling schemes, please check your collection calendar. If you do not have one, please contact the **Recycling Team** on **01227 862 138**, Monday to Friday 9am to 5pm or e-mail us at **recycling@canterbury.gov.uk** or visit **www.canterbury.gov.uk/recycling**.

All bags and bins must be at your property boundary, where they are clearly visible from the road.

## Requesting additional recycling sacks

Every property in the district will receive one roll of sacks, three times a year. Each roll contains 17 sacks. You may request more by visiting **www.canterbury.gov.uk/recycling** and filling in an on-line form or call **01227 862 138** or **862 203**.

## Additional services

- Assisted collections
- Clinical waste collections
- Bulky waste collections
- Purchasing purple landfill waste sacks for excess rubbish.

For more information on the above services, please call us on **0800 031 9091** or e-mail **recycling@canterbury.gov.uk**

This leaflet is available in alternative formats and can be translated into other languages.

Printed on recycled paper.

 **recycle**  
for Canterbury district



# Your guide to recycling in the Canterbury district



 **recycle**  
for Canterbury district

